

Revolutionary probe design enabling robust and reliable process analysis for all kind of optical methods

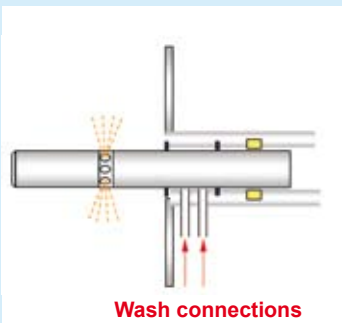
THE PROBLEM: WINDOWS FOULING

Optical methods are applied in many areas (chemical, pharmaceutical, food and automobile industries), in as far as it can be ensured that the analysis is secured during the process. The problem of window fouling is relatively small when analysing liquids. The fouling of the observation window, however, has to be taken very seriously in the area of solids processing (bulk solids, sticky, pulpy type products etc.). **All methods have in common the fact that any eventual fouling of surfaces, which are in contact with the product, has an impact on the analysis.** The design of a process analyzer has to be so construed, that the analysis can be ensured at every moment in time during the process.

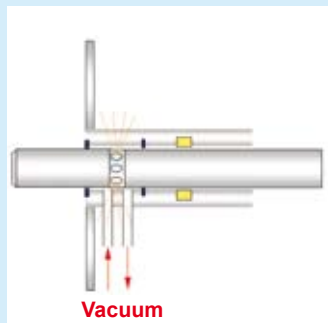
The combination of production process knowledge, optical design and process analytical understanding represented by the companies J&M Analytik AG and GEA Pharma Systems led to simple and implementable solutions. These solutions solve the basic problem of cleaning the observation window during the process whenever it is necessary and at any time. It enables now the reliable, robust and continuous use on optical methods in process analytics at any time during the production processes.

OUR SOLUTION: TIDAS A LIGHTHOUSE PROBE™ PRINCIPLE

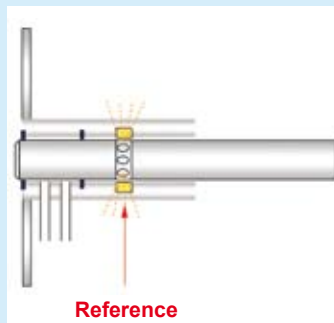
1. Measurement



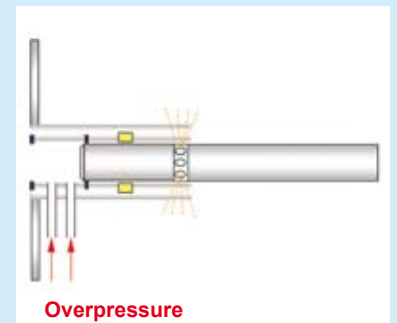
2. Window wash



3. Cleanness check & Calibration



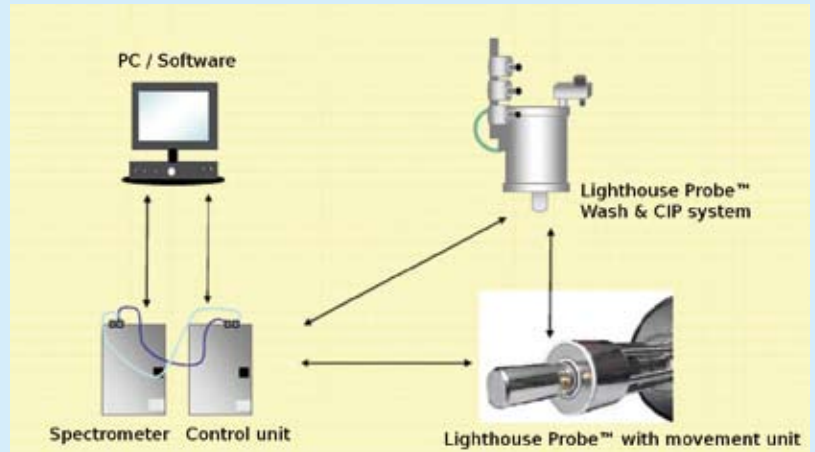
4. Cleaning in Place (CIP)



YOUR BENEFIT: MORE QUALITY AND QUANTITY

Features:

- In-line cleaning of the observation window
- In-line inspection of the degree of cleaning
- In-line calibration possible
- Fully cleanable during the plant cleaning (complete CIP possibility = Cleaning in Place)
- Large observation volume in 7 segments 360°
- Suitable for NIR, UV, VIS, RAMAN, fluorescence, imaging methods (particle size, distribution)



Effort for clear view in process analysis

TIDAS A Lighthouse Probe™

can be used for realtime release so your benefits are savings in: costs, time, resources and materials

Lighthouse Probe™ products:

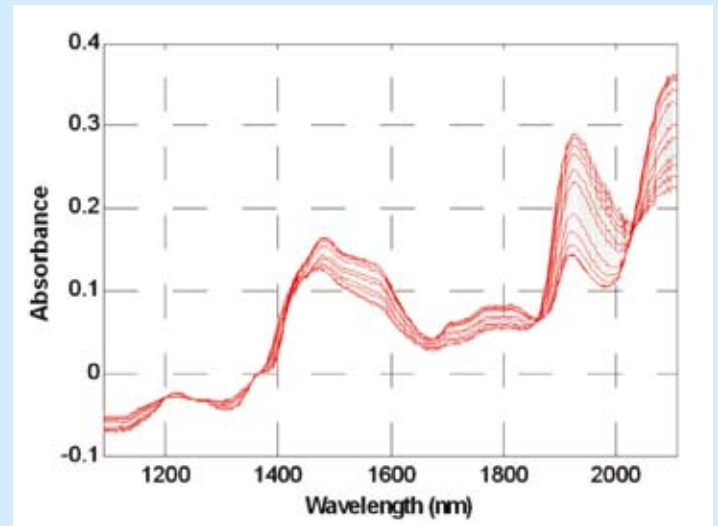
- Manual Probe
- Wash Probe
- CIP Probe

Prospects for PAT with the Lighthouse Probe™ :

- Moisture monitoring
- Pellet Coating
- Blend Monitoring
- And more



Manual Probe with Adaption to TC-Sensorport



Monitoring of water content